



**IRIS**

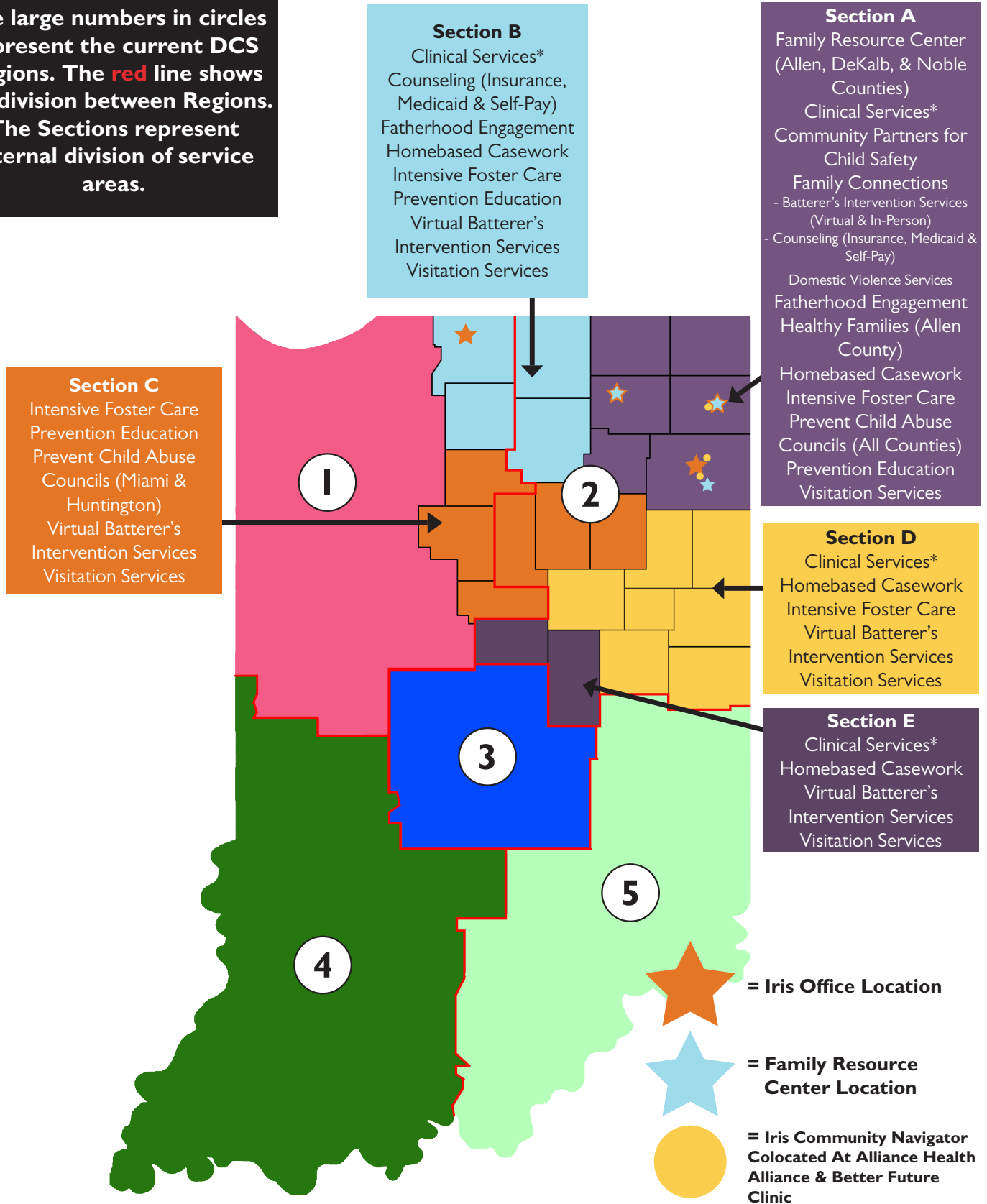
Family  
Support  
Center

# Program Directory



# Iris Family Support Center Services Map

The large numbers in circles represent the current DCS Regions. The red line shows the division between Regions. The Sections represent internal division of service areas.



\* Clinical Services includes Family Preservation Services, Family Centered Treatment, Home Based Family Centered Therapy and Trauma Focused Cognitive Behavior Therapy.

• <b>Where To Go.....</b>	<b>4</b>
• <b>Community Services.....</b>	<b>5</b>
Community Partners.....	6
Family Resource Centers.....	6
Healthy Families.....	7
Prevent Child Abuse Councils.....	7
Prevention Education & Outreach.....	8
• <b>Family Connections.....</b>	<b>9</b>
Adolescent Therapeutic Skills Group.....	10
Counseling Services.....	10
Custody Exchanges.....	11
Domestic Violence Services.....	11
High Conflict Services.....	12
High Conflict Co-Parenting Class.....	12
Home Evaluations.....	13
New Parenting Partnership.....	13
Power of Parenting.....	14
Substance Misuse Assessments.....	14
Substance Misuse Groups & Counseling.....	15
Supervised Parenting Time.....	15
Therapeutic Art Groups.....	16
Therapeutic Supervised Parenting Time.....	16
Truancy & Parenting Group.....	17
• <b>Referred Services.....</b>	<b>18</b>
Clinical Services.....	19
Family Preservation Services.....	19
Fatherhood Engagement Services.....	20
Home-Based Casework Services.....	20
Homemaker/Parent Aid Services.....	21
Intensive Foster Care Services (IFCS).....	21
Supervised Visitation.....	22
• <b>Administration/Partner Agencies.....</b>	<b>23</b>
Alliance Health.....	24
Better Future Clinic.....	24
Bookstart.....	25
CHILL.....	25
Dr. Bill Lewis Center for Children.....	26
Accounting.....	27
Human Resources.....	27
Intake & Data.....	27
IT.....	28
Marketing & Communications.....	28
Philanthropy.....	28
Operations & Facilities.....	29
Training.....	30



# Where To Go



**Below you can find a selection of examples and suggestions of which program might be the best place to start looking for services or support.**

<b>Situation</b>	<b>Available Programs</b>
<b>A client is facing having their electricity turned off after a financial emergency.</b>	<b>Community Partners</b>
<b>A family who is prenatal or has a baby under 3 months old, who live in Allen County, would like support for their growing family.</b>	<b>Healthy Families, Family Resource Centers</b>
<b>Someone is struggling to cope after the loss of a loved on.</b>	<b>Counseling Services</b>
<b>A young adult is close to aging out of the foster care system and does not have stable housing lined up.</b>	<b>CHILL, Community Partners</b>
<b>There is an upcoming community resource fair that Iris could share their information at.</b>	<b>Prevention Education &amp; Outreach</b>
<b>During a visit, a client mentions they are struggling to get diapers for their infant.</b>	<b>Family Resource Centers, Healthy Families, Philanthropy</b>
<b>Someone is experiencing domestic violence in their home.</b>	<b>High Conflict Services</b>
<b>You have questions regarding your benefits or a organization policy.</b>	<b>Human Resources</b>



# Community Services



Community Services exist to connect children and families to resources in our community. We work to support caregivers in creating safe, stable home environments by connecting them with partner agencies, sharing helpful information, or problem solving to meet their needs.

The programs within Community Services are available to the public and families can apply directly themselves to take part in these programs.



## Community Partners

**Description:** *This program is designed as a short-term case management process to provide information and referrals to families facing a crisis situation. Home visits can be provided for up to six months at a time. Community Partners works with families to connect to resources; provide guidance and education; offer concrete assistance if needed; and connect with the community.*

**Main Contact:** *Christy Robbins, [crobbins@irisfamily.org](mailto:crobbins@irisfamily.org), 1-800-752-7116*

**Program Eligibility:** *Anyone with a child age 18 and younger in their household or is prenatal. Should not be involved with DCS, Healthy Families, or Juvenile Probation for a child in the home.*

**Referral Page:** *[bit.ly/iris-cp-referral](http://bit.ly/iris-cp-referral)*

**Service Area:** *Section A*

**When To Go Here:** *Child Truancy/Behavioral Issues, Domestic Violence, Employment Searches, Housing Resources, Mental Health, Utility Assistance*

---

## Family Resource Centers at Iris

**Description:** *Family Resource Centers exist to support families and provide a community-centered location for parents to access resources, encouragement, and physical support. Iris FRCs have a special emphasis on early childhood development and offer free development screenings for young children. Prenatal Support Program for expectant parents where participants receive a car seat & other incentive items.*

**Main Contact:** *Gina Vardaman, [gvardaman@irisfamily.org](mailto:gvardaman@irisfamily.org), 317-983-0301*

**Program Eligibility:** *Anyone is eligible to access this service.*

**Referral Page:** *[www.irisfamily.org/frc-referral](http://www.irisfamily.org/frc-referral)*

**Service Area:** *Allen County, DeKalb County, Noble County*

**When To Go Here:** *Baby/Household/Hygiene Items, Child Development, Childcare Resources, Employment Searches, Housing Resources, Parent Support Groups*



## Healthy Families

**Description:** A free, voluntary, support program for families with a new baby that is focused on developing and strengthening the bond between parents and their children with additional support for the physical, emotional, and intellectual health and well-being of children and their parents, to improve overall family functioning. Services are available for up to three years.

**Main Contact:** Carol Deakins, [cdeakins@irisfamily.org](mailto:cdeakins@irisfamily.org), 260-421-5005

**Program Eligibility:** Reside within Allen County, be prenatal (24 weeks or later) or have a baby under 3 months of age and be within income guidelines. Service history and admission limit requirements. See Healthy Families for full eligibility requirements.

**Referral Page:** [bit.ly/iris-hf-referral](http://bit.ly/iris-hf-referral)

**Service Area:** Allen County

---

## Prevent Child Abuse Councils

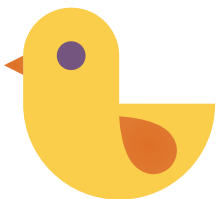
**Description:** Prevent Child Abuse (PCA) Councils bring together leaders in our community to act as a voice for families and children to make sure their needs are met. PCA Councils advocate for the best interest of families year-round and plan out and execute the annual Child Abuse Prevention Month celebrations each April.

**Main Contact:** Gina Vardaman, [gvardaman@irisfamily.org](mailto:gvardaman@irisfamily.org), 317-983-0301

**Referral Page:** [www.irisfamily.org/pca-councils](http://www.irisfamily.org/pca-councils)

**Service Area:** Allen, DeKalb, Huntington, LaGrange, Miami, Noble, Steuben and Whitley Counties

**When To Go Here:** Local Advocacy





## Prevention Education and Outreach

**Description:** *Prevention Education and Outreach provide educational trainings to school, churches and community organizations. Children, ages 3 to 18, as well as adults, can receive training on the Indicators of Child Abuse and Neglect, MBF Child/Teen Safety Matters, Bullying, Cyber/Digital Safety, Human Trafficking, Safe Sitter, Safe @ Home, Gun Safety, LGBTQIA+ Community and more. Prevention Education also regularly serves as the main representatives of Iris at community events, festivals and resource fairs.*

**Main Contact:** *Gina Vardaman, [gvardaman@irisfamily.org](mailto:gvardaman@irisfamily.org), 317-983-0301*

**Program Eligibility:** *Anyone is eligible to access this service.*

**Referral Page:** *[www.irisfamily.org/prevention-education-request](http://www.irisfamily.org/prevention-education-request)*

**Service Area:** *Section A, Section B, Section C*

**When To Go Here:** *Community Event Presence, Safety Education*





## Family Connections



We can all use a helping hand. Through Iris's Family Connections program, we work with children and families to empower them to advocate for themselves. This occurs through parenting classes, individual counseling, domestic violence services and family conflict services.

Many of these services are available to the general public but may have costs associated with them. Others may require a Court Order or other referral to receive services. Please reach out directly to the services if you need to figure out pricing for a client or if they need assistance to afford access to these services.



## Adolescent Therapeutic Skills Group

**Description:** *Group supporting the mental health and therapeutic needs of teenagers.*

**Fees:** \$37.50 Per Session.

**Main Contact:** Cathy Leslie, [cleslie@irisfamily.org](mailto:cleslie@irisfamily.org), 260-426-9999

**Program Eligibility:** *Anyone ages 13-18 is eligible to access these services.*

**Referral Page:** [www.irisfamily.org/family-connections-referral](http://www.irisfamily.org/family-connections-referral)

**Service Area:** Section A

**When To Go Here:** *Counseling/Therapy, Mental Health, Teenagers*

---

## Counseling Services

**Description:** *Individual and family counseling services available for anyone needing help navigating struggles or conflict in their life.*

**Fees:** *Accepts most insurance providers and Medicaid.*

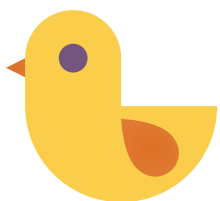
**Main Contact:** Cathy Leslie, [cleslie@irisfamily.org](mailto:cleslie@irisfamily.org), 260-426-9999

**Program Eligibility:** *Anyone is eligible to access these services.*

**Referral Page:** [www.irisfamily.org/counseling-services-referral](http://www.irisfamily.org/counseling-services-referral)

**Service Area:** Section A, Section B

**When To Go Here:** *Counseling/Therapy, Mental Health*





## Custody Exchanges

**Description:** *For separated parents who have a contentious relationship, Custody Exchanges allows for the child to shift from one parent's custody to the other in a safe, conflict-free space. All Custody Exchanges must occur during regular office hours.*

**Fees:** \$30 per hour.

**Main Contact:** Cathy Leslie, [cleslie@irisfamily.org](mailto:cleslie@irisfamily.org), 260-426-9999

**Program Eligibility:** *Anyone is eligible to access this service.*

**Referral Page:** [www.irisfamily.org/family-connections-referral](http://www.irisfamily.org/family-connections-referral)

**Service Area:** Allen County

**When To Go Here:** *Custody Exchange, High Conflict Relationships*

---

## Domestic Violence Services

**Description:** *For victims of domestic violence, Family Connections offers counseling services, case management support and support groups. For perpetrators of domestic violence, Iris offers an Abuser's Intervention Program.*

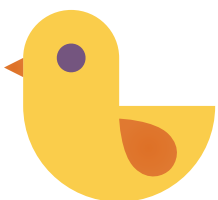
**Program Eligibility:** *Anyone is eligible to access this service.*

**Main Contact:** Cathy Leslie, [cleslie@irisfamily.org](mailto:cleslie@irisfamily.org), 260-426-9999

**Referral Page:** [www.irisfamily.org/high-conflict](http://www.irisfamily.org/high-conflict)

**Service Area:** Section A

**When To Go Here:** *Domestic Violence whether it be physical, mental, verbal or emotional.*





## High Conflict Services

**Description:** *Supporting those currently in, in the process of leaving, or have already left a high conflict relationship. High Conflict Services offers Coaching, Therapy and Mediation.*

**Program Eligibility:** *Anyone is eligible to access this service.*

**Main Contact:** *Cathy Leslie, [cleslie@irisfamily.org](mailto:cleslie@irisfamily.org), 260-426-9999*

**Referral Page:** *[www.irisfamily.org/high-conflict](http://www.irisfamily.org/high-conflict)*

**Service Area:** *Section A*

**When To Go Here:** *High Conflict Relationships, Coaching, Mediation, Therapy*

---

## High Conflict Co-Parenting Class (Always A Parent)

**Description:** *Always a Parent is a class for co-parents who have demonstrated an inability or unwillingness to work through issues without conflict. This is a six-week class that runs for two hours each session. Parents must attend together.*

**Fees:** *\$300 per person.*

**Main Contact:** *Cathy Leslie, [cleslie@irisfamily.org](mailto:cleslie@irisfamily.org), 260-426-9999*

**Program Eligibility:** *Participants will need to contact Family Connections.*

**Referral Page:** *[www.irisfamily.org/family-connections-referral](http://www.irisfamily.org/family-connections-referral)*

**Service Area:** *Section A*

**When To Go Here:** *Conflict Management, Parenting Class*



## Home Evaluations

**Description:** *General evaluation of the physical home environment for safety issues related to children. Generally part of a visitation process with courts. Differs from a Home Study.*

**Fees:** \$60 per hour.

**Main Contact:** Cathy Leslie, [cleslie@irisfamily.org](mailto:cleslie@irisfamily.org), 260-426-9999

**Program Eligibility:** *Anyone is eligible to access this service.*

**Referral Page:** [www.irisfamily.org/family-connections-referral](http://www.irisfamily.org/family-connections-referral)

**Service Area:** Allen County

**When To Go Here:** Home Safety Concerns

---

## New Parenting Partnership

**Description:** *Offered as “Pre-Divorce” and “Paternity” (Never Married), this class is designed to give you the tools for effective communication and help you understand how co-parenting separated/divorcing affects you, your co-parent, and, most importantly, your children. This is a four-hour class.*

**Main Contact:** Cathy Leslie, [cleslie@irisfamily.org](mailto:cleslie@irisfamily.org), 260-426-9999

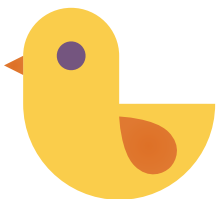
**Referral Page:** [www.irisfamily.org/family-connections-referral](http://www.irisfamily.org/family-connections-referral)

**Service Area:** Section A

**Program Eligibility:** *Participants will need to contact Family Connections. This class does not require both co-parents to attend.*

**Fees:** \$75 per person.

**When To Go Here:** Parenting Class, Parenting Support





## Power of Parenting

**Description:** *This is a class for parents who have a need and/or desire to increase their knowledge of parenting. This is a five-week class that runs for 1.5 to 2 hours each session.*

**Fees:** *May be covered through grant funding, limits may apply.*

**Main Contact:** *Cathy Leslie, [cleslie@irisfamily.org](mailto:cleslie@irisfamily.org), 260-426-9999*

**Program Eligibility:** *Anyone is eligible to access this service.*

**Referral Page:** *[www.irisfamily.org/power-of-parenting-registration](http://www.irisfamily.org/power-of-parenting-registration)*

**Service Area:** *Section A*

**When To Go Here:** *Parenting Class, Parenting Support*

---

## Substance Misuse Assessments

**Description:** *Court-ordered/self-referred assessments for individuals seeking to establish the presence or absence of substance misuse. Results can be used to determine most appropriate level of treatment.*

**Fees:** *May be covered through grant funding, limits may apply.*

**Main Contact:** *Cathy Leslie, [cleslie@irisfamily.org](mailto:cleslie@irisfamily.org), 260-426-9999*

**Program Eligibility:** *Anyone is eligible to access this service. When referral is court ordered, the client will need to provide the court order.*

**Referral Page:** *[www.irisfamily.org/family-connections-referral](http://www.irisfamily.org/family-connections-referral)*

**Service Area:** *Allen & DeKalb Counties*

**When To Go Here:** *Substance Misuse*



## Substance Misuse Groups and Counseling

**Description:** *Court-ordered/self-referred clinical groups and individual counseling using evidence-based curriculum to treat substance misuse. Levels of service provided will depend on results of assessment, if present.*

**Fees:** *May be covered through grant funding, limits may apply.*

**Main Contact:** *Cathy Leslie, [cleslie@irisfamily.org](mailto:cleslie@irisfamily.org), 260-426-9999*

**Program Eligibility:** *Anyone is eligible to access this service. When referral is court ordered, the client will need to provide the court order.*

**Referral Page:** *[www.irisfamily.org/family-connections-referral](http://www.irisfamily.org/family-connections-referral)*

**Service Area:** *Allen & DeKalb Counties*

**When To Go Here:** *Substance Misuse, Counseling, Support Groups*

---

## Supervised Parenting Time

**Description:** *Court-ordered/self-referred visitation services for parents when circumstances prevent unsupervised contact. Out-of-county services are available. Additional fees may apply.*

**Fees:** *\$60 per hour.*

**Main Contact:** *Cathy Leslie, [cleslie@irisfamily.org](mailto:cleslie@irisfamily.org), 260-426-9999*

**Program Eligibility:** *Anyone is eligible to access this service. When referral is court ordered, the client will need to provide the court order. When self-referred, both parties will need to agree to service.*

**Referral Page:** *[www.irisfamily.org/family-connections-referral](http://www.irisfamily.org/family-connections-referral)*

**Service Area:** *Section A*

**When To Go Here:** *Conflict Management, Parenting Support*



## Therapeutic Art Groups

**Description:** *Therapeutic Art Groups use creativity to help children and adolescents with working through emotions, thoughts and experiences, fostering self-awareness, building emotional regulation and improving overall well-being.*

**Fees:** *May be covered through grant funding, limits may apply.*

**Main Contact:** *Cathy Leslie, [cleslie@irisfamily.org](mailto:cleslie@irisfamily.org), 260-426-9999*

**Program Eligibility:** *Anyone Ages 5-18*

**Referral Page:** *[www.irisfamily.org/art-groups](http://www.irisfamily.org/art-groups)*

**Service Area:** *Allen and DeKalb Counties*

**When To Go Here:** *Emotional Regulation, Mental Health Support*

---

## Therapeutic Supervised Parenting Time

**Description:** *Court-ordered/self-referred therapeutic visitation services for parents when circumstances prevent unsupervised contact. Out-of-county services are available. Additional fees may apply.*

**Fees:** *\$90 per hour.*

**Main Contact:** *Cathy Leslie, [cleslie@irisfamily.org](mailto:cleslie@irisfamily.org), 260-426-9999*

**Program Eligibility:** *Anyone is eligible to access this service. When referral is court ordered, the client will need to provide the court order. When self-referred, both parties will need to agree to service.*

**Referral Page:** *[www.irisfamily.org/family-connections-referral](http://www.irisfamily.org/family-connections-referral)*

**Service Area:** *Section A*

**When To Go Here:** *Conflict Management, Parenting Support*



## Truancy and Parenting Group

**Description:** *This group looks to address the root causes of chronic truancy from school among children. Children and their parents meet at the same time with separate groups to help resolve barriers to more regular school attendance.*

**Fees:** *May be covered through grant funding, limits may apply.*

**Main Contact:** *Cathy Leslie, [cleslie@irisfamily.org](mailto:cleslie@irisfamily.org), 260-426-9999*

**Program Eligibility:** *Anyone is eligible to access this service. Referrals may be made through Truancy Court.*

**Referral Page:** *[www.irisfamily.org/family-connections-referral](http://www.irisfamily.org/family-connections-referral)*

**Service Area:** *Allen and DeKalb Counties*

**When To Go Here:** *Parenting Support, Support Group*





## Referred Services



Everyone needs a helping hand from time to time. In Referred Services, we work to engage with families and walk with them as they tackle life's challenges. Whether is navigating a crisis, rebuilding relationships through therapeutic services, or maintaining a connection with visitation services, Iris is here to guide and support children and families.

We work to provide therapy, case management, and other services focused on building family relationships, as well as the skills of attachment, initiative and self-regulation. Through this, we empower children to enjoy healthy relationships and a safe family environment.



## Clinical Services

**Description:** Reserved for families with the highest level of need, Iris offers evidence-based therapeutic services designed to restore families. This includes Trauma-Focused Cognitive Behavioral Therapy, Home Based Therapy and Family-Centered Treatment (FCT), a family systems model focusing on assisting families with creating lasting change.

**Main Contact:** Cheryl O'Connell, [coconnell@irisfamily.org](mailto:coconnell@irisfamily.org), 260-261-6412

**Program Eligibility:** Must be referred by DCS or Juvenile Probation

**Referral Page:** [www.irisfamily.org/referred-services](http://www.irisfamily.org/referred-services)

**Service Area:** Section A, Section B, Section C, Section D, Section E

**When To Go Here:** Counseling/Therapy, Mental Health

---

## Family Preservation Services

**Description:** Through this service, one referral to Iris can create a wrap-around of services designed to meet the needs of families with the goal of creating positive outcomes for everyone. Staff experienced in Intensive Intervention rapidly respond to crisis situations where a child is at immediate risk for maltreatment and could lead to removal from the home.

**Main Contact:** Trish Fox, [tfox@irisfamily.org](mailto:tfox@irisfamily.org), 260-222-8207

**Program Eligibility:** Must be referred by DCS or Juvenile Probation

**Referral Page:** [www.irisfamily.org/referred-services](http://www.irisfamily.org/referred-services)

**Service Area:** Section A, Section B, Section C, Section D, Section E

**When To Go Here:** Case Management, Family Conflict



## Fatherhood Engagement Services

**Description:** *When a dad begins to take greater responsibility in their child's life, this program helps fathers establish that active role in a healthy manner while building a stable relationship with their child. Iris staff use the evidence-based models of Motivational Interviewing, Nurturing Parents Curriculum and 24/7 Dads curriculum to support the attachment, bonding and relationship building between father and child.*

**Main Contact:** Trish Fox, [tfox@irisfamily.org](mailto:tfox@irisfamily.org), 260-222-8207

**Program Eligibility:** Must be referred by DCS or Juvenile Probation

**Referral Page:** [www.irisfamily.org/fatherhood-engagement](http://www.irisfamily.org/fatherhood-engagement)

**Service Area:** Section A, Section B, Section C

**When To Go Here:** Family Bonding, Fathers

---

## Home-Based Casework Services

**Description:** *Provides in-home, one-on-one services to parents to help families recover from abuse or neglect. By having a caseworker in the home environment, families can pinpoint key issues and work together to resolve their conflicts.*

**Main Contact:** Trish Fox, [tfox@irisfamily.org](mailto:tfox@irisfamily.org), 260-222-8207

**Program Eligibility:** Must be referred by DCS or Juvenile Probation

**Referral Page:** [www.irisfamily.org/referred-services](http://www.irisfamily.org/referred-services)

**Service Area:** Section A, Section B, Section C, Section D, Section E

**When To Go Here:** Case Management, Family Conflict



## Homemaker/Parent Aid Services

**Description:** *Iris's staff monitor visits, take parents to appointments, and help parents learn to care for their children.*

**Main Contact:** *Trish Fox, [tfox@irisfamily.org](mailto:tfox@irisfamily.org), 260-222-8207*

**Program Eligibility:** *Must be referred by DCS or Juvenile Probation*

**Referred Page:** *[www.irisfamily.org/referred-services](http://www.irisfamily.org/referred-services)*

**Service Area:** *Section A, Section B, Section C, Section D, Section E*

**When To Go Here:** *Family Bonding*

---

## Intensive Foster Care Services (IFCS)

**Description:** *Through this service, Iris provides full wrap-around support for foster youth and foster family placements to achieve a permanency outcome for the foster youth and stability in the foster home. By offering evidence-based strategies, individual clinical therapy, and intensive support, Iris supports foster youth experiencing significant needs as they process their experiences and seek healing.*

**Main Contact:** *Trish Fox, [tfox@irisfamily.org](mailto:tfox@irisfamily.org), 260-222-8207*

**Program Eligibility:** *Must be referred by DCS or Juvenile Probation*

**Referred Page:** *[www.irisfamily.org/referred-services](http://www.irisfamily.org/referred-services)*

**Service Area:** *Section A, Section B, Section C, Section D*

**When To Go Here:** *Foster Youth, Intensive Intervention*



## Supervised Visitation (DCS Cases)

**Description:** Conducted at Iris, in the client's home, or in public, this service teaches families parenting skills while maintaining the safety of children who have been removed from the home. This service also makes it possible for siblings and extended family members to maintain relationships when children are in foster care.

**Main Contact:** Trish Fox, [tfox@irisfamily.org](mailto:tfox@irisfamily.org), 260-222-8207

**Program Eligibility:** Must be referred by DCS or Juvenile Probation

**Referred Page:** [www.irisfamily.org/referred-services](http://www.irisfamily.org/referred-services)

**Service Area:** Section A, Section B, Section C, Section D, Section E

**When To Go Here:** Visitation





## Administration & Partner Agencies



Our Administrative departments exist to help support our service lines and front-line staff so they can focus on serving children and families.

Additionally, our partner agencies of BookStart, CHILL and the Dr. Bill Lewis Center for Children, also referred to as the CAC, help serve the community in specific ways that Iris cannot otherwise provide. Iris serves as the Administrative Agent for all three agencies, providing assistance with accounting, fundraising, human resources and other supports.



# Partner Agencies



## Alliance Health Center

**Description:** Alliance Health Centers provide primary medical, OB/GYN and behavioral health care for patients of all ages. They are committed to the community we serve, and provide quality healthcare options, regardless of ability to pay. A sliding fee discount is available to those who qualify. An Iris representative is housed out of the Lafayette Street & Auburn Alliance Health Center locations to provide on-demand resource navigation and community referrals to any family who comes in needing a helping hand.

**Main Contact:** Gina Vardaman, [gvardaman@irisfamily.org](mailto:gvardaman@irisfamily.org), 317-983-0301

**Service Area:** Allen County

**Website:** [www.myalliancehealth.org/](http://www.myalliancehealth.org/)

**When To Go Here:** Healthcare

---

## Better Future Clinic

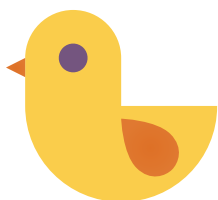
**Description:** The Better Future Clinic is a first-of-its-kind clinic providing a safe place for families to receive care and guidance following suspected child maltreatment. Iris works with the Better Future Clinic to directly address the social needs of families who visit the clinic, providing on-demand resource navigation and community referrals to any family who needs it.

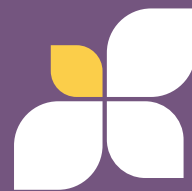
**Main Contact:** James Macon, [jmacon@irisfamily.org](mailto:jmacon@irisfamily.org), 260-261-6273

**Service Area:** Allen County

**Website:** [www.parkview.com/locations/better-future-clinic](http://www.parkview.com/locations/better-future-clinic)

**When To Go Here:** Healthcare





## **Bookstart**

**Description:** *The mission of BookStart is to encourage parents to build communication skills and strengthen the parent-child bond, through the use of books, from infancy on. BookStart provides partnering agencies a continual supply of new, appealing board books for children, 0-3 years of age, that staff members and home visitors share with parents and children, together, to promote literacy, brain development, togetherness while modeling fun, age-appropriate and effective book-sharing ideas.*

**Main Contact:** Erin Noonan, [enoonan@irisfamily.org](mailto:enoonan@irisfamily.org), 260-209-1129

**Service Area:** Allen County

**Website:** [www.bookstartfund.org](http://www.bookstartfund.org)

**When To Go Here:** Books for Young Children

---

## **CHILL (Creating Hope Instilling Life Lessons)**

**Description:** *CHILL addresses the need for young people aging out of foster care, and prevent homelessness, unemployment, and generational cycles of child abuse and neglect. Through CHILL, the tenants are given the social services and tools needed to conduct their lives as independent adults. As the tenants develop, CHILL staff assist them in completing their education or taking on the job-hunting process.*

**How to Apply:** Call Brightpoint Coordinated Entry Housing Line -  
260-423-3546 ext. 332

**Main Contact:** Endia Cassel, [ecassel@chillfw.org](mailto:ecassel@chillfw.org), 260-267-4694

**Program Eligibility:** Age 18-25; Aging out of foster care and/or at risk of facing homelessness.

**Website:** [www.chillfw.org](http://www.chillfw.org)

**When To Go Here:** Youth Aging Out of Foster Care or Otherwise Facing Homelessness



# Partner Agencies



## Dr. Bill Lewis Center for Children - (CAC)

**Description:** *The Dr. Bill Lewis Center for Children is a nationally accredited organization providing a safe, neutral space for children to share experiences of alleged abuse. Specially trained forensic interviewers use age-appropriate techniques while a multidisciplinary team - viewing via closed-circuit TV - offers support and input. This team includes representatives from the Prosecutor's Office, Child Services, law enforcement, the Fort Wayne Sexual Assault Treatment Center, and victim advocates.*

**Main Contact:** *Mike Lewandowski, [mlewandowski@irisfamily.org](mailto:mlewandowski@irisfamily.org)*

**Program Eligibility:** *Must have a referral.*

**Service Area:** *Allen, Adams, DeKalb, Huntington, LaGrange, Noble, Steuben, Wells and Whitley Counties*

**Website:** *[www.lewiscac.org](http://www.lewiscac.org)*

**When To Go Here:** *Forensic interviews for alleged child victims of sexual abuse.*



Dr. Bill Lewis Center for Children  
Providing safe, forensic interviews for children





## Accounting

**Description:** *Our Accounting Department manages Iris's financials, both paying for invoices and receiving payments, as well as processing staff payrolls.*

**Main Contact:** *accounting@irisfamily.org*

**When To Go Here:** *Approval for Purchases, Payroll Questions*

---

## Human Resources

**Description:** *Human Resources posts and process the roles Iris is openingly hiring for, helps resolve internal issues, and manages employee benefits.*

**Main Contact:** *hr@irisfamily.org*

**When To Go Here:** *Employee Benefits, Hiring*

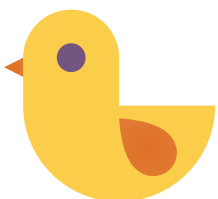
---

## Intake & Data

**Description:** *The Intake & Data Team provides reception services for the Main Fort Wayne office and is responsible for collecting and managing data from each department to support tracking and reporting efforts. In addition, the team processes all incoming referrals and handles billing services for the Family Engagement, Clinical, and Family Connections departments.*

**Main Contact:** *Kassandra Fuchs, kfuchs@irisfamily.org*

**When To Go Here:** *Intake, Data, Billing, Room Scheduling*





## IT

**Description:** *IT helps ensure that the computers and other technology that staff use is up-to-date and helps resolve any technological issues that might arise.*

**Main Contact:** *Help Desk, [helpdesk@irisfamily.org](mailto:helpdesk@irisfamily.org)*

**When To Go Here:** *Technology Assistance*

---

## Marketing & Communications

**Description:** *Marketing and Communications oversees the way Iris and its services are promoted to the the public through advertising, social media presence, local media and the Iris website. In addition, Marketing and Communication researches and applies for Grants and Funding from foundations, philanthropic branches of businesses, and government agencies.*

**Main Contact:** *Whitney Craig, [wrcraig@irisfamily.org](mailto:wrcraig@irisfamily.org)*

**When To Go Here:** *External Communication, Grants Writing, Marketing Pieces, Media Relations, Social Media Management, Website Management*

---

## Philanthropy

**Description:** *The Philanthropy Department oversees Iris fundraising efforts through the solicitation of donors and execution of fundraising events such as the Brown Bag Lunch and Duck Race. They also process the donation of physical items and communicate to staff when there is a surplus donation of a particular item.*

**Main Contact:** *Morgan Weber, [mweber@irisfamily.org](mailto:mweber@irisfamily.org)*

**When To Go Here:** *Donations, Events, Fundraising*



## Operations & Facilities

**Description:** *Operations and Facilities oversees the maintenance of our offices and facilities including general upkeep, repairs and housekeeping. They also have keys to the Duck Trucks and our facilities.*

**Main Contact:** *Jesse Dudgeon, [jdudgeon@irisfamily.org](mailto:jdudgeon@irisfamily.org)*

**When To Go Here:** *Housekeeping, Office Maintenance, Keyholders*

---

## Training

**Description:** *Our Training Team helps ensure that staff are up-to-date on the trainings they need for their roles as well as help develop the programming for our professional development events such as All-Staff Events.*

**Main Contact:** *Melissa Nelson, [training@irisfamily.org](mailto:training@irisfamily.org)*

**When To Go Here:** *Onboarding Trainings, Annual Trainings, Certifications, CEUs, Training Database*





# IRIS

Family  
Support  
Center

## Follow Us On Our Social Media

**Iris - @irisfamilysupport**

**Facebook** - [facebook.com/irisfamilysupport](https://facebook.com/irisfamilysupport)

**Instagram** - [instagram.com/irisfamilysupport](https://instagram.com/irisfamilysupport)

**LinkedIn** - [linkedin.com/company/iris-family](https://linkedin.com/company/iris-family)

**Threads** - [threads.com/@irisfamilysupport](https://threads.com/@irisfamilysupport)

**Bluesky** - [bsky.app/profile/irisfamilysupport.bsky.social](https://bsky.app/profile/irisfamilysupport.bsky.social)

**Family Resource Centers - @frc\_iris**

**Facebook** - [facebook.com/allenfrc](https://facebook.com/allenfrc)

**Instagram** - [instagram.com/ac\\_frc](https://instagram.com/ac_frc)